





Gate Resistance	Rg	f = 1MHz		1.5		
Input capacitance	Ciss	f = 1MHz				
		V				

N Channel characteristics curve

Fig.1 Power Dissipation

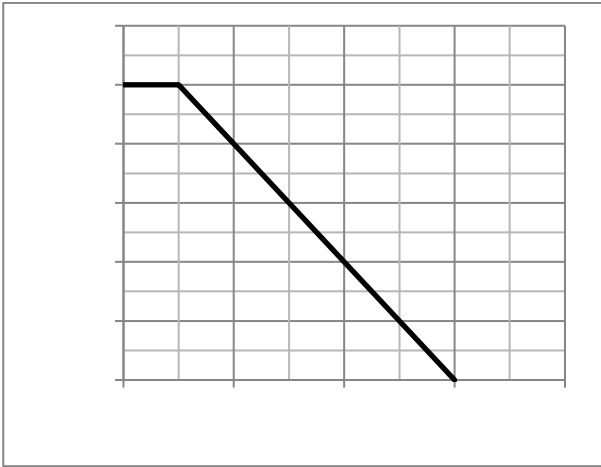


Fig.2 Typical output Characteristics

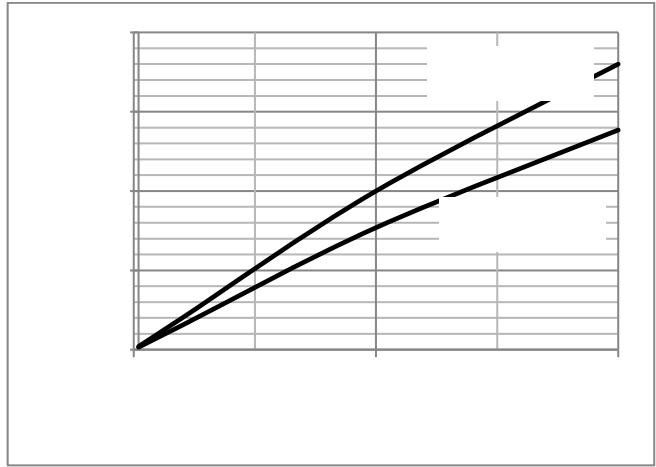


Fig.3 Threshold Voltage V.S Junction Temperature

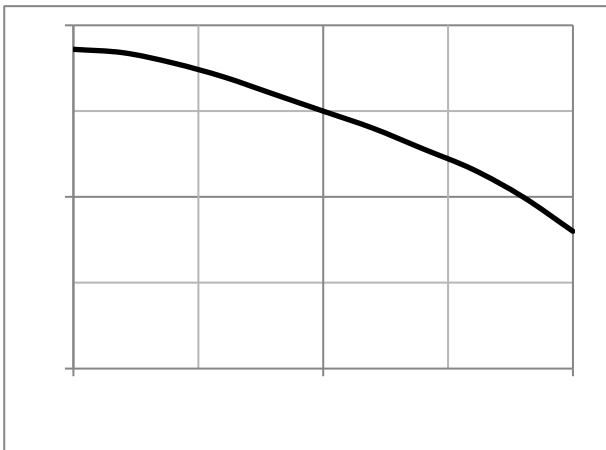
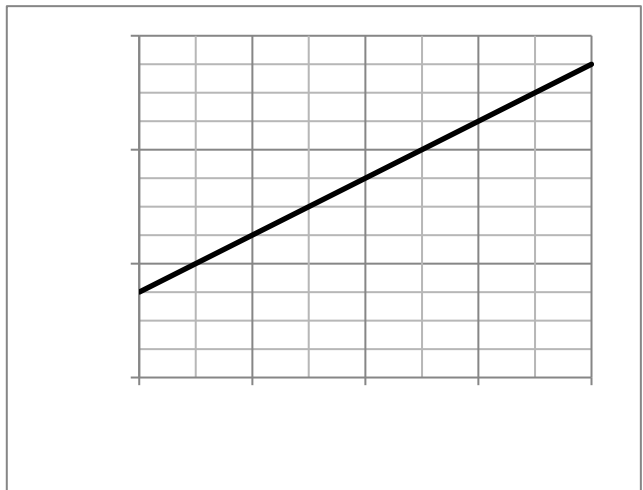
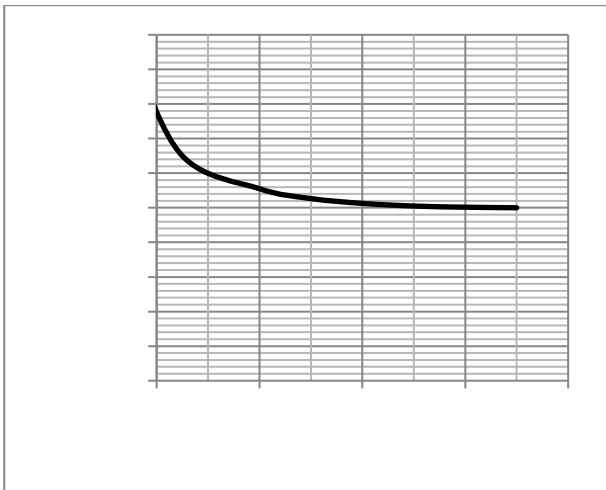
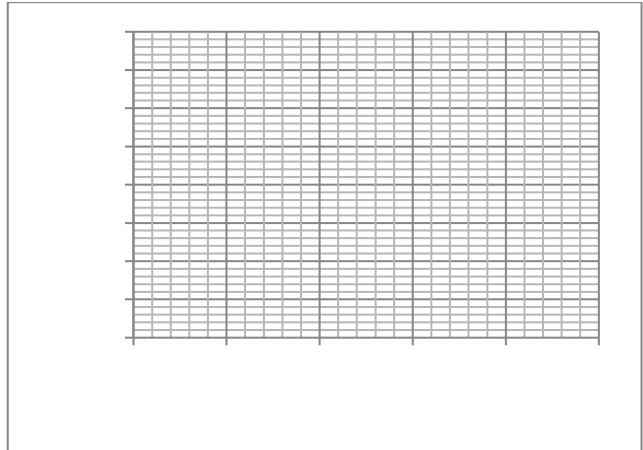


Fig.4 Resistance V.S Drain Current



P Channel characteristics curve

Fig.1 Power Dissipation Derating Curve

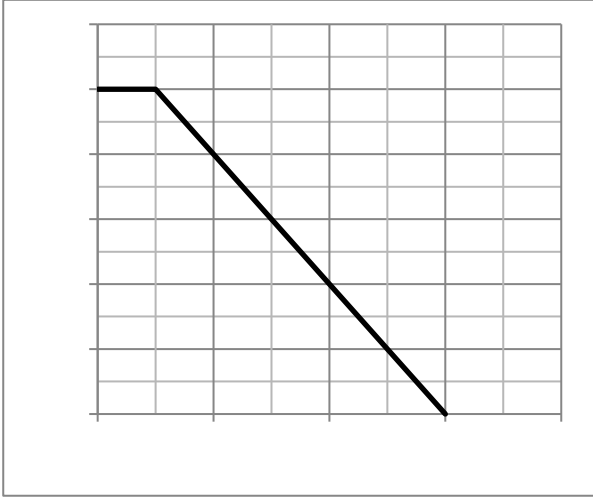


Fig.2 Typical output Characteristics

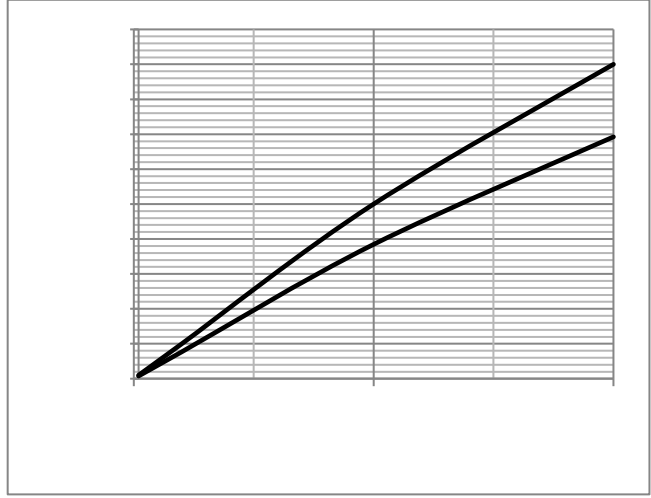


Fig.3 Threshold Voltage V.S Junction Temperature

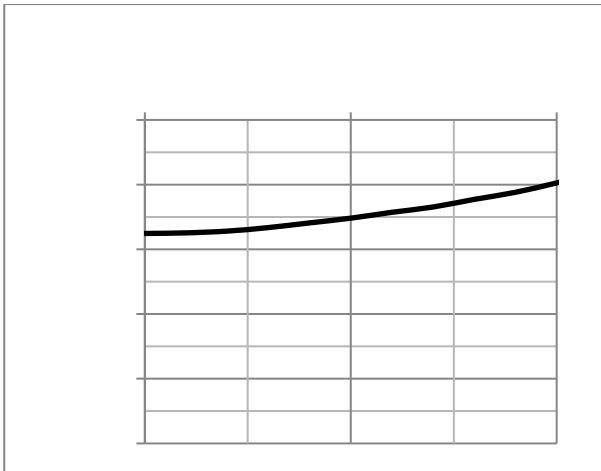
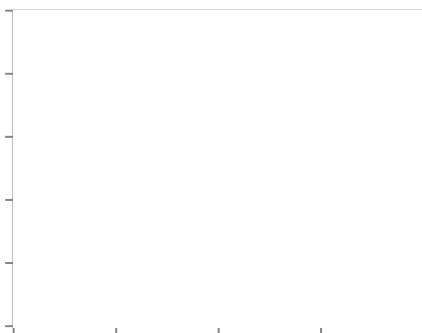
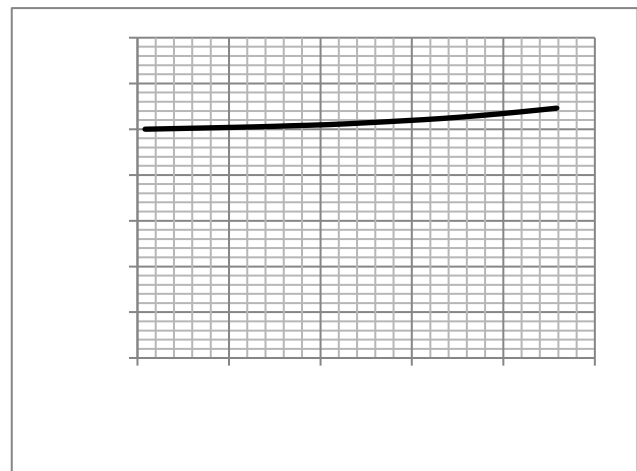


Fig.4 Resistance V.S Drain Current



Test Circuit

Fig.1 Switching Time Measurement Circuit

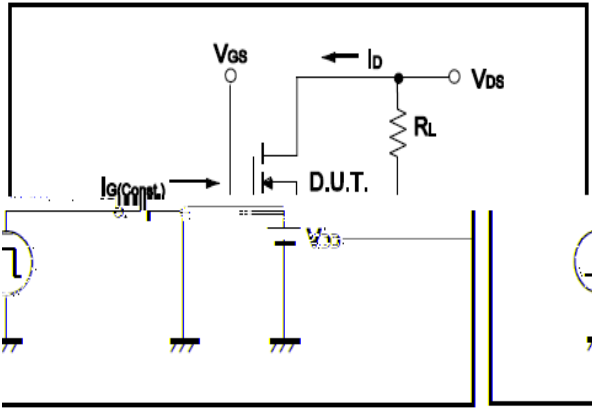


Fig.2 Gate Charge Waveform

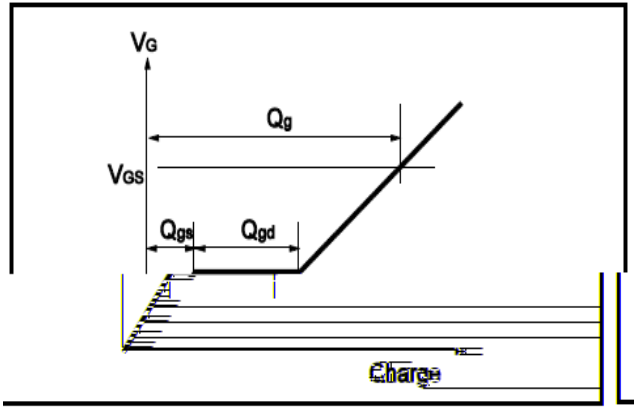


Fig.3 Switching Time Measurement Circuit

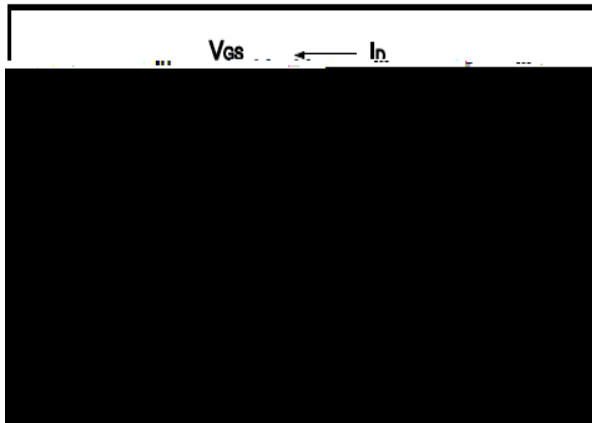


Fig.4 Gate Charge Waveform

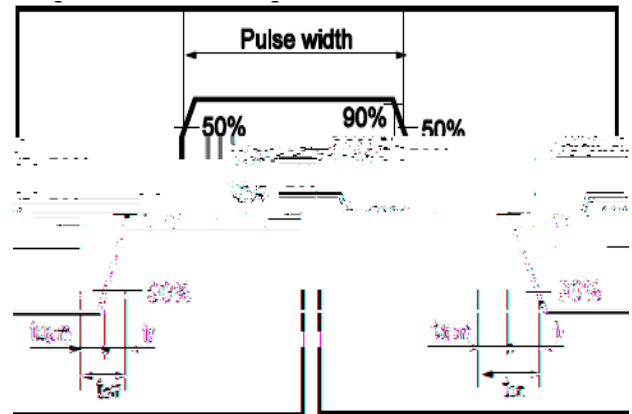


Fig.5 Avalanche Measurement Circuit

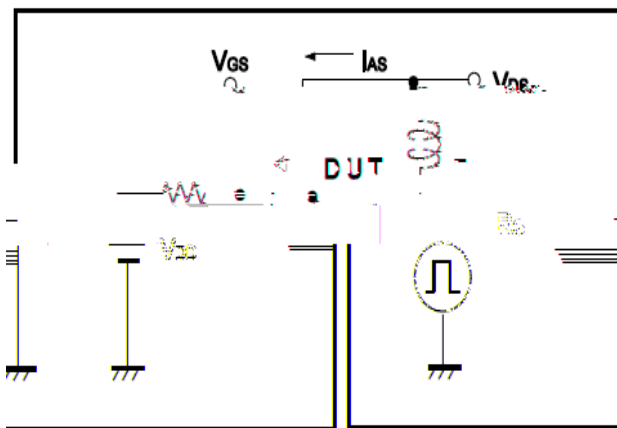


Fig.6 Avalanche Waveform

