



The ZM280N06I

T_C =25

Parameter	Symbol	Rating	Unit
Drain-Source Voltage	V _{DS}	60	V
Gate-Source Voltage	V _{GS}	±20	V
Continuous Drain Current	I _{D@TC=25}	25	A
	I _{D@TC=75}	19	A
	I _{D@TC=100}	15.75	A
Pulsed Drain Current	I _{DM}	75	A
Total Power Dissipation	P _{D@TC=25}	50	W
Total Power Dissipation	P _{D@TA=25}	1.25	W
Operating Junction Temperature	T _J	-55 to 150	
Storage Temperature	T _{STG}	-55 to 150	
Single Pulse Avalanche Energy	E _{AS}	75	mJ

Fig.1

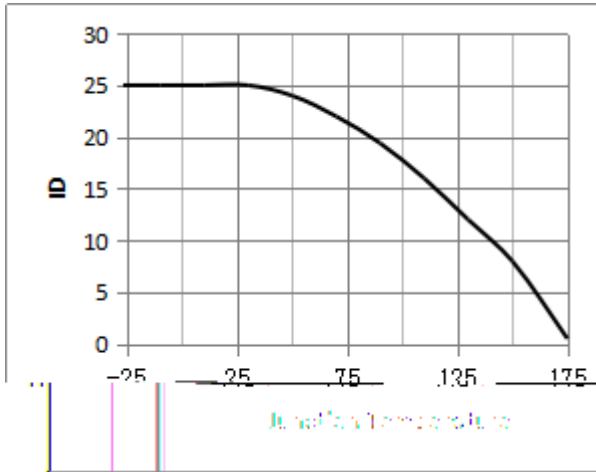


Fig.2 Typical output Characteristics

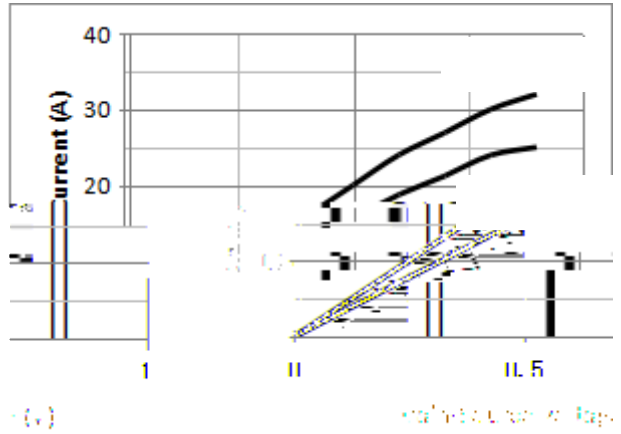


Fig.3 Threshold Voltage V.S Junction Temperature



Fig.4 Resistance V.S Drain Current

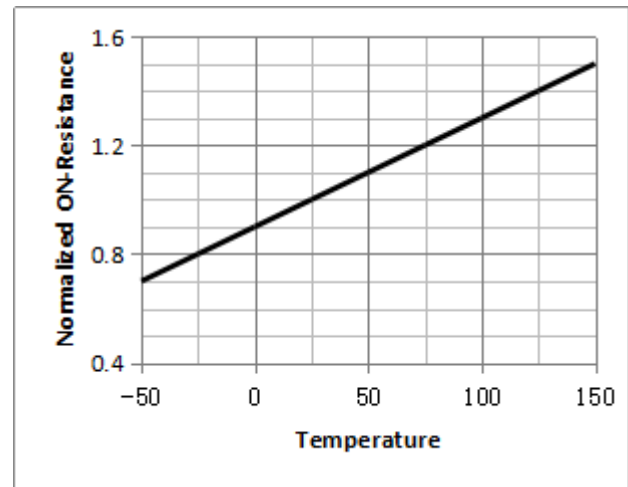
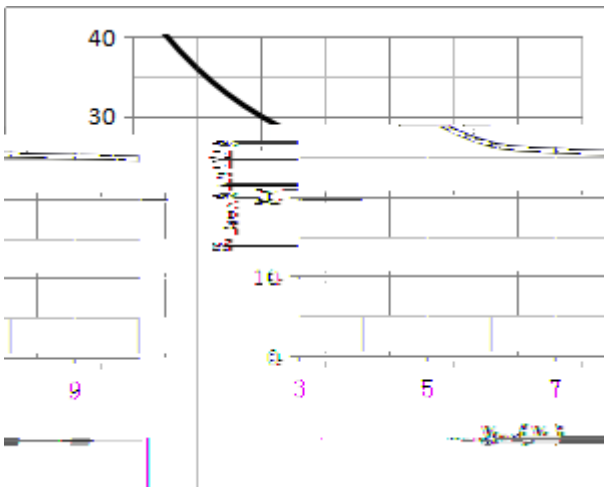
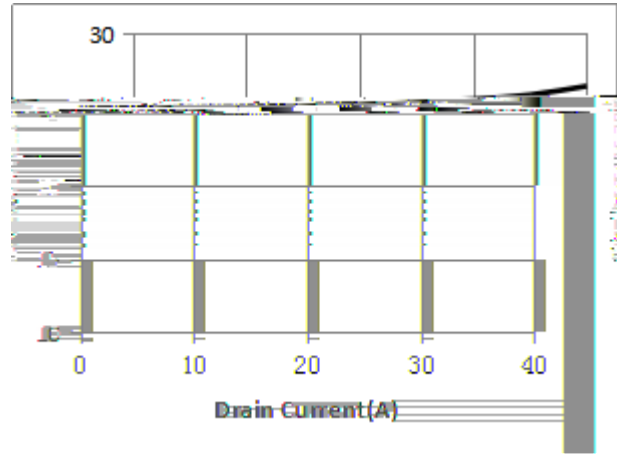


Fig.7 Switching Time Measurement Circuit

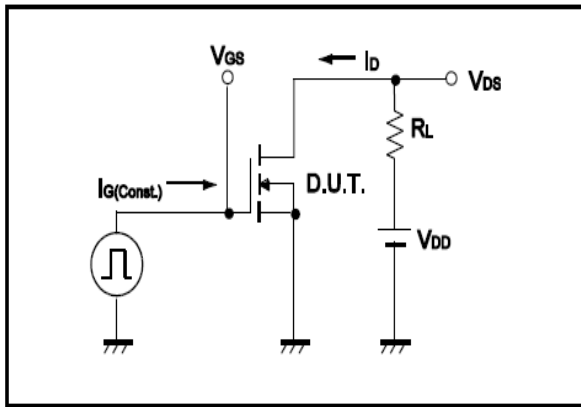


Fig.8 Gate Charge Waveform

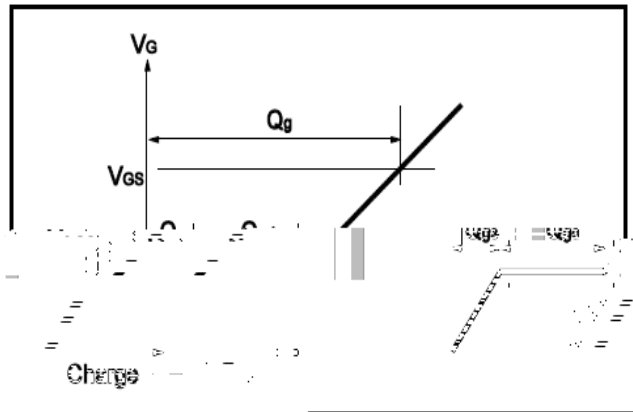


Fig.9 Switching Time Measurement Circuit

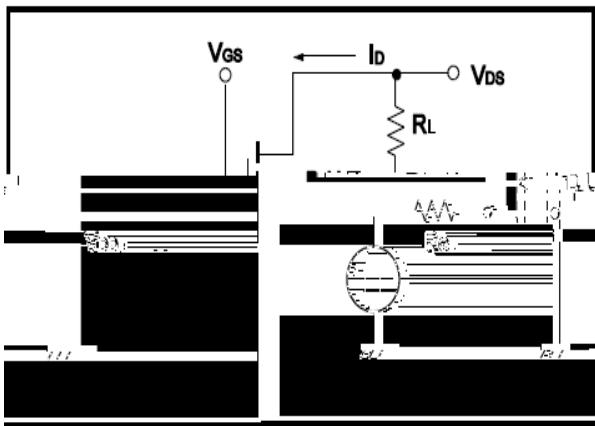


Fig.10 Gate Charge Waveform

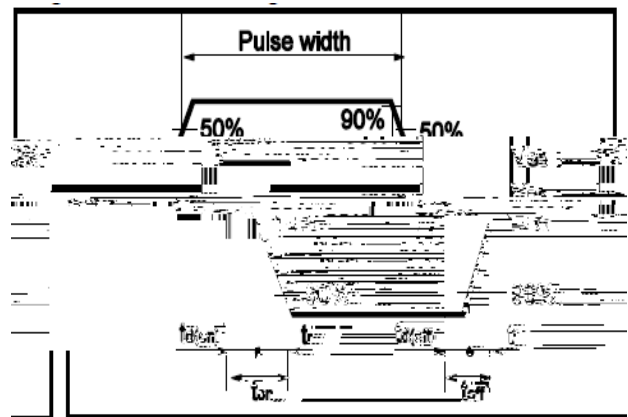


Fig.11 Avalanche Measurement Circuit

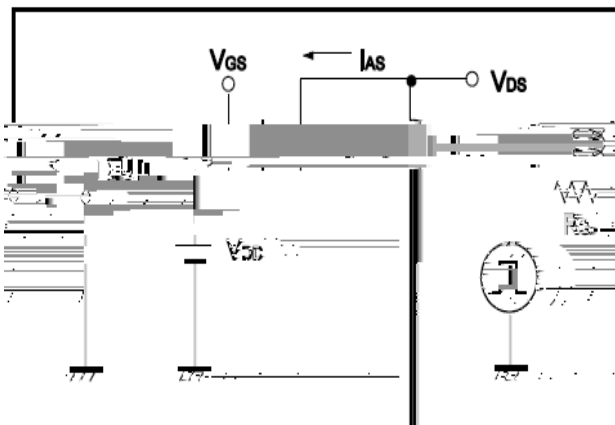
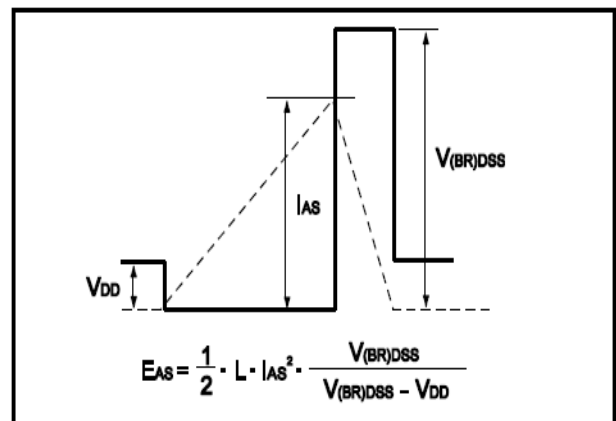


Fig.12 Avalanche Waveform





-251)

Unit mm

SYMBOL	min	max	SYMBOL	min
--------	-----	-----	--------	-----